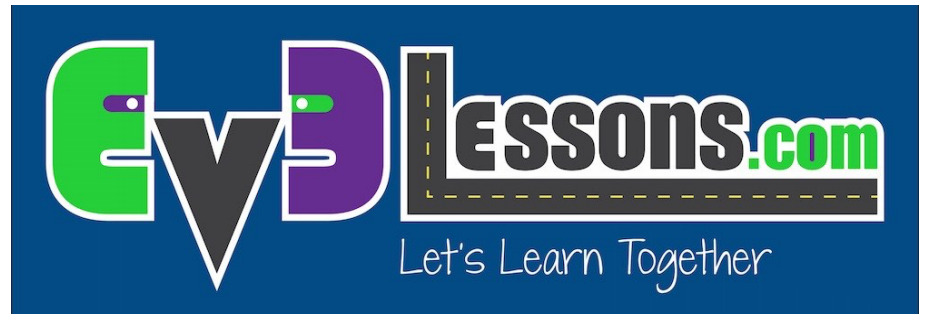


Bonus
EV3 Programming
Lessons



Adding Third Party Blocks

Adding Third Party Blocks

- Third Party Blocks are non-LEGO blocks to control non-LEGO sensors and other electrical elements such as the PixyCam and the PSP-Nx Combo with Wireless Controller
- This will allow you to use the new sensor in wait blocks, switches, loops, and more
- These blocks are found on the individual manufacturers' site (e.g. Mindsensors, Dexter Industries, etc.)

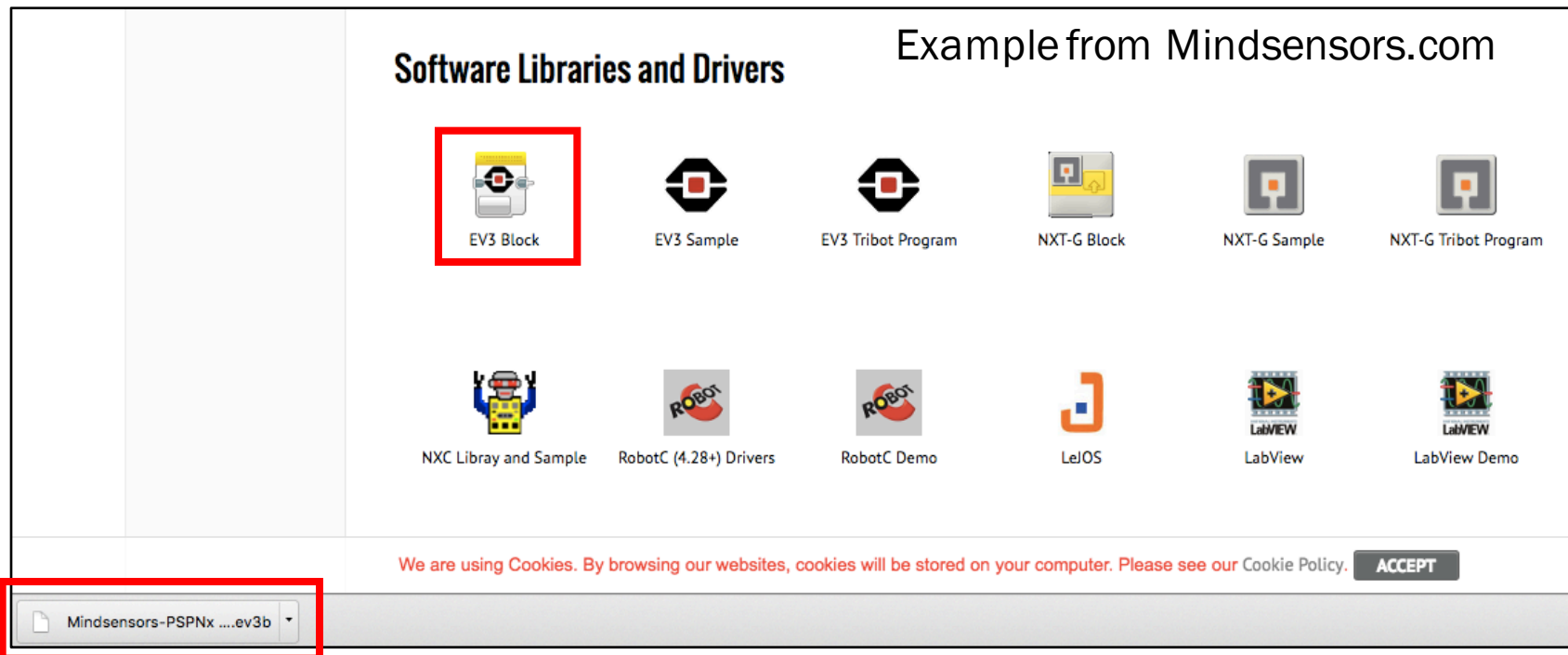


Step 1: Download Block

- Download the necessary block online from the correct location – usually from the Manufacturer of the third party sensor
- Sometimes the file will be zipped. You will need to unzip the file before proceeding

Software Libraries and Drivers

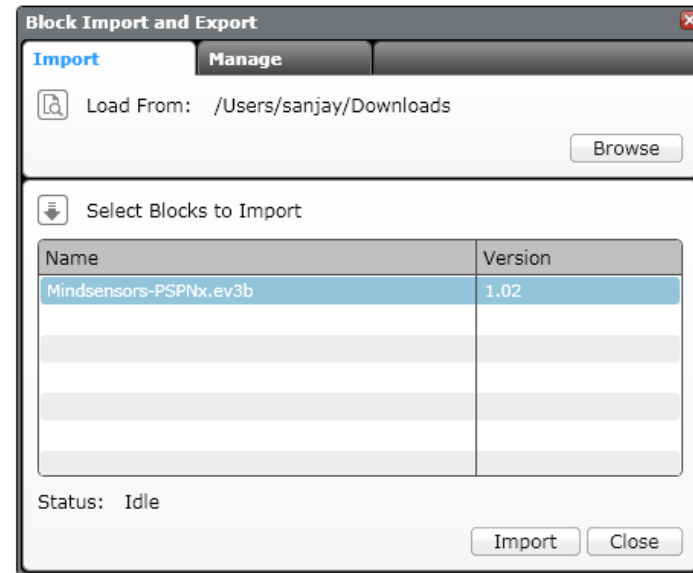
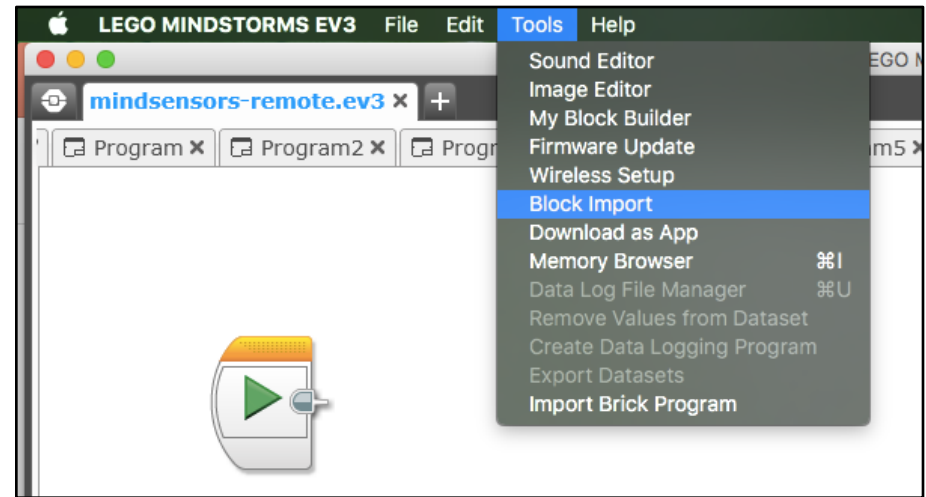
Example from Mindsensors.com



The screenshot displays a grid of software libraries and drivers. The first icon in the top row, labeled 'EV3 Block', is highlighted with a red box. Other icons include 'EV3 Sample', 'EV3 Tribot Program', 'NXT-G Block', 'NXT-G Sample', and 'NXT-G Tribot Program' in the top row, and 'NXC Library and Sample', 'RobotC (4.28+) Drivers', 'RobotC Demo', 'LeI OS', 'LabVIEW', and 'LabVIEW Demo' in the bottom row. At the bottom of the page, there is a cookie consent banner with the text 'We are using Cookies. By browsing our websites, cookies will be stored on your computer. Please see our Cookie Policy.' and an 'ACCEPT' button. Below the banner is a file download bar showing 'Mindsensors-PSPNxev3b'.

Step 2: Import Block

- Open your EV3 software
- Go to Tools → Block Import
- Browse through your files and find the file you downloaded in Step 1
- Select the block and click Import
- You will have to restart your software before using the block



CREDITS

- This tutorial was created by Sanjay Seshan and Arvind Seshan
- More lessons are available at www.ev3lessons.com



This work is licensed under a [Creative Commons Attribution-NonCommercial-ShareAlike 4.0 International License](https://creativecommons.org/licenses/by-nc-sa/4.0/).